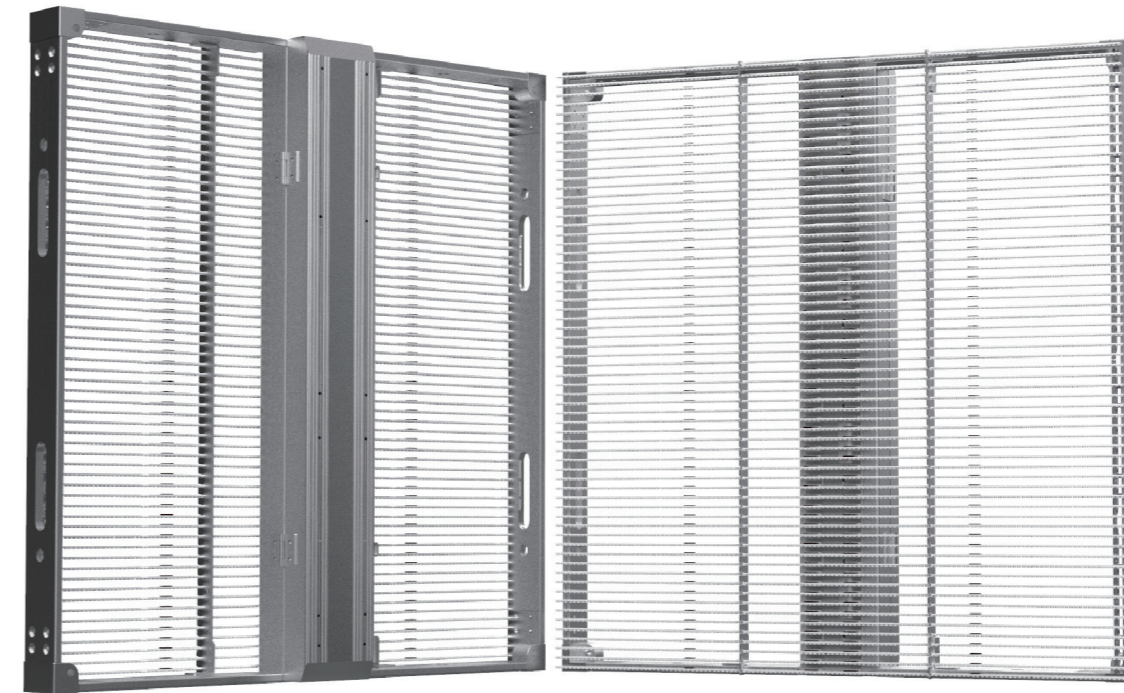


G SERIES 系列

High-transparency window LED display 高通透橱窗屏



G SERIES

- High transparency, up to 78%
- Light weight
- Super slim
- High brightness, over 6,000nits brightness
- Individual strip design with hot plug
- Sturdy and reliable cabinet design
- Invisible cabling, tidy appearance

- 高通透率，最高可达78%
- 超轻设计
- 超薄箱体
- 高亮度，≥ 6000nits
- 可单灯条维护；支持热拔插
- 箱体坚固可靠设计
- 箱内走线，外观整洁
- 前维护，超轻，高亮，超薄，大视角



前维护
Front Access



轻便
LightWeight



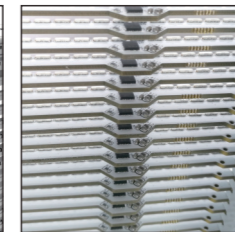
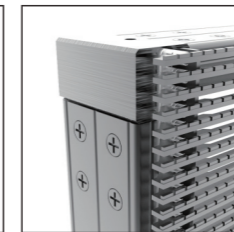
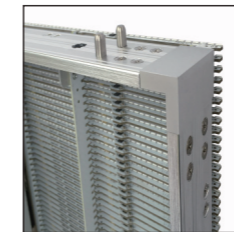
高亮
High
Brightness



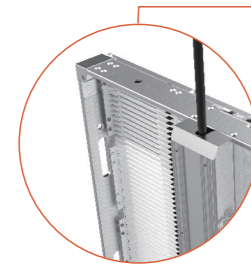
超薄
Ultra Slim



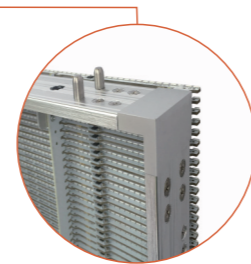
宽视角
Wide
Viewing Angle



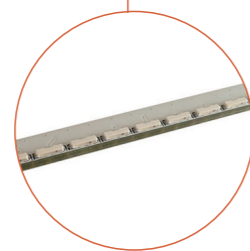
FEATURES 特性



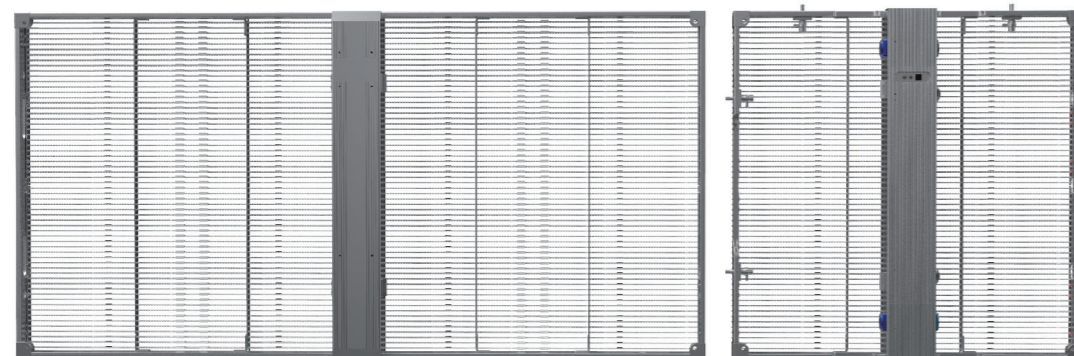
Invisible cabling 无线设计



Sturdy frame, super slim 铝框架, 超轻超薄



Side emitting LED strip, ultra bright 侧发光设计



Rental panel and fixed panel optional 租箱与固装箱体可选

SPECIFICATIONS 详细参数

参数	Parameter	Unit	G3-7	G5	G7	G10
像素间距	Pixel pitch	mm	H3.906/V7.813	5.208	7.813	10.417
亮度	Brightness	nits	4000	5000	5000	4500
像素组成	Pixel configuration	R/G/B	SMD 3 in 1			
水平视角	Viewing angle-Horizontal (50% brightness)	deg.	160 (+70/-70)			
垂直视角	Viewing angle-Vertical (50% brightness)	deg.	90(+25/-65)			
最小观看距离	Recommended minimum viewing distance	m	3.9	5.2	7.8	10.4
透光率	Transparency ratio	%	65	40	50	78
箱体宽度	Panel width	mm	1000	500	500	500
箱体高度	Panel height	mm	500			
箱体厚度	Panel depth	mm	90			
箱体面积	Panel area	m ²	0.5	0.25	0.25	0.25
箱体材料	Panel material		Aluminum (型材铝)			
箱体重量	Panel weight	Kg	5	5.6	5.4	5.2
每箱体像素点	Pixels per panel		16,384	9,216	4,096	2,034
每平方像素点	Pixels per sq.meter		32,768	36,864	16,384	9,216
箱体像素矩阵	Pixel matrix per panel		256x64	96x96	64x64	48x48
亮度控制	Brightness control		255			
数字处理	Digital processing	bit	14			
视屏帧频	Frame rate	Hertz	50/60			
视频刷新	Display refresh rate	Hertz	1920			
输入电压	Input voltage (nomina)	VAC	100 ~ 240			
输入电源频率	Input power frequency	Hertz	50 ~ 60			
输入最大功率	Input power (Max.)	W/m ²	700	850	880	960
输入额定功耗	Input power (Avg.)	W/m ²	245	295	308	336
工作环境	Operating temperature range	deg.C	-10 ~ +40			
显示屏使用寿命	Lifetime (50% brightness)	Hour	100,000			