

E  
SERIES

Indoor 480 X 480 fine pitch LED panel



E  
SERIES

- Die-casting aluminum frame, lightweight and ultra slim
- Front & rear access
- Memory-on-board IM
- Patented quick lock & positioning design for fast installation
- Innovative clickable mask ensures better flatness and amazing contrast ratio
- User-friendly side lock
- 90° corner panel available



Front Access



Light Weight



High Definition



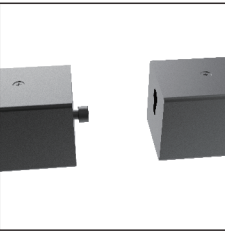
Rental



Ultra Slim

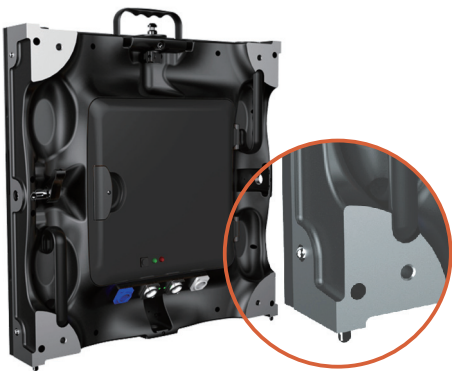


Noise Free



CE ETL RoHS EMC

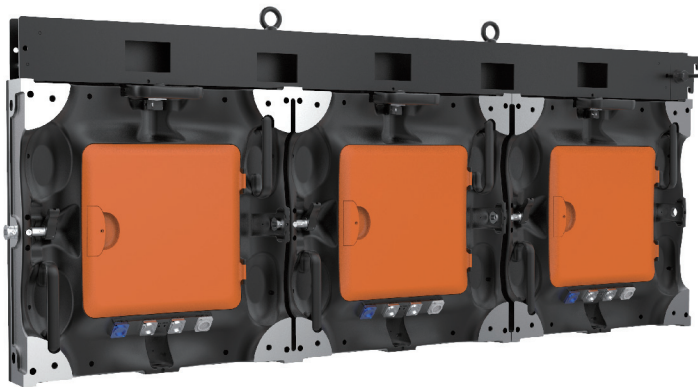
FEATURES



Corner-protection and positioning pin



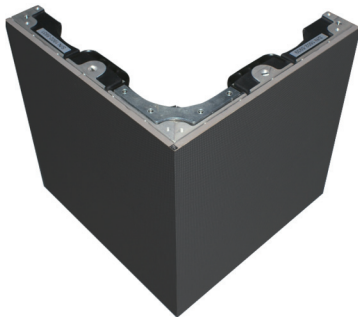
Fast lock



Hanging



Stacking



90°corner

SPECIFICATIONS

| Parameter                                 | Unit  | E1.2         | E1.5    | E1.8    | E2.5    | E3      | E3.7    | E4      |
|---|-------|--------------|---------|---------|---------|---------|---------|---------|
| Pixel pitch                               | mm    | 1.25         | 1.5     | 1.875   | 2.5     | 3       | 3.75    | 4       |
| Brightness                                | nits  | 700          | 800     | 900     | 1200    | 1200    | 1200    | 1200    |
| Pixel configuration                       | R/G/B | SMD 3 in 1   |         |         |         |         |         |         |
| Colour temperature                        | deg.K | 6500         |         |         |         |         |         |         |
| Viewing angle-Horizontal (50% brightness) | deg.  | 160（+80/-80） |         |         |         |         |         |         |
| Viewing angle-Vertical (50% brightness)   | deg.  | 140（+70/-70） |         |         |         |         |         |         |
| Recommended minimum viewing distance      | m     | 1.2          | 1.5     | 1.8     | 2.5     | 3       | 3.7     | 4       |
| Panel width                               | mm    | 480          |         |         |         |         |         |         |
| Panel height                              | mm    | 480          |         |         |         |         |         |         |
| Panel depth                               | mm    | 77           |         |         |         |         |         |         |
| Panel area                                | m²    | 0.2304       |         |         |         |         |         |         |
| Panel material                            |       | Aluminum     |         |         |         |         |         |         |
| Panel weight                              | Kg    | 9.5          | 9.5     | 9.5     | 8.2     | 8.2     | 8.2     | 8.2     |
| Ingress protection (front/rear)           | IP    | 30/30        |         |         |         |         |         |         |
| Pixels per panel                          |       | 147,456      | 102,400 | 65,536  | 36,864  | 25,600  | 16,384  | 14,400  |
| Pixels per sq.meter                       |       | 640,000      | 444,444 | 284,444 | 160,000 | 111,111 | 71,111  | 62,500  |
| Pixel matrix per panel                    |       | 384x384      | 320x320 | 256x256 | 192x192 | 160x160 | 128x128 | 120x120 |
| Brightness control                        |       | 255          |         |         |         |         |         |         |
| Digital processing                        | bit   | 16           |         |         |         |         |         |         |
| Frame rate                                | Hertz | 50/60        |         |         |         |         |         |         |
| Display refresh rate                      | Hertz | 1920         |         |         |         |         |         |         |
| Input voltage                             | VAC   | 100 ~ 240    |         |         |         |         |         |         |
| Input power frequency                     | Hertz | 50 ~ 60      |         |         |         |         |         |         |
| Input power (Max.)                        | W/m²  | 960          | 900     | 880     | 750     | 750     | 610     | 780     |
| Input power (Avg.)                        | W/m²  | 336          | 315     | 308     | 262     | 270     | 213     | 280     |
| Operating temperature range               | Deg.C | -10 ~ +40    |         |         |         |         |         |         |
| Lifetime (50% brightness)                 | Hour  | 100,000      |         |         |         |         |         |         |