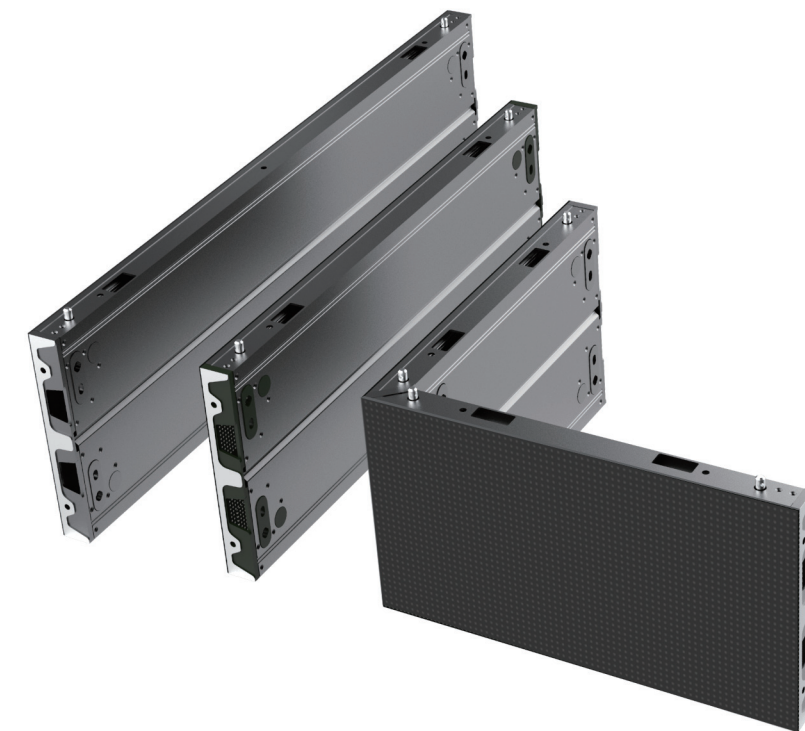


WB

SERIES 系列

Wall paper pro LED panel 第二代墙纸显示屏



WB SERIES

- Direct wall-mounted LED solution
- One universal cabinet for all pitches
- Cable-free module design
- Easy for 16:9 screen ratio
- Easy installation & access
- Only 38mm in thickness
- Only 24kg/m²
- Dual backup on power and receiving card
- Front access
- LED显示屏贴墙安装解决方案
- 所有点间距可通用一款箱体
- 模组无线连接，模块化
- 便于搭建16:9比例的屏幕
- 方便安装和维护
- 厚度仅为38mm
- 重量仅24kg/m²
- 电源接收卡双备份
- 前维护



前维护
Front Access



轻
Light Weight



高清小间距
High Definition

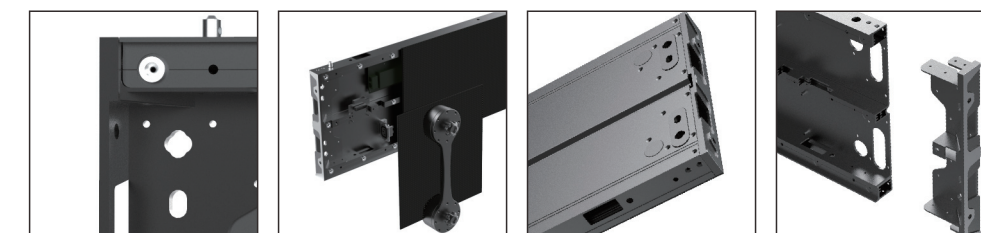


薄
Ultra Slim



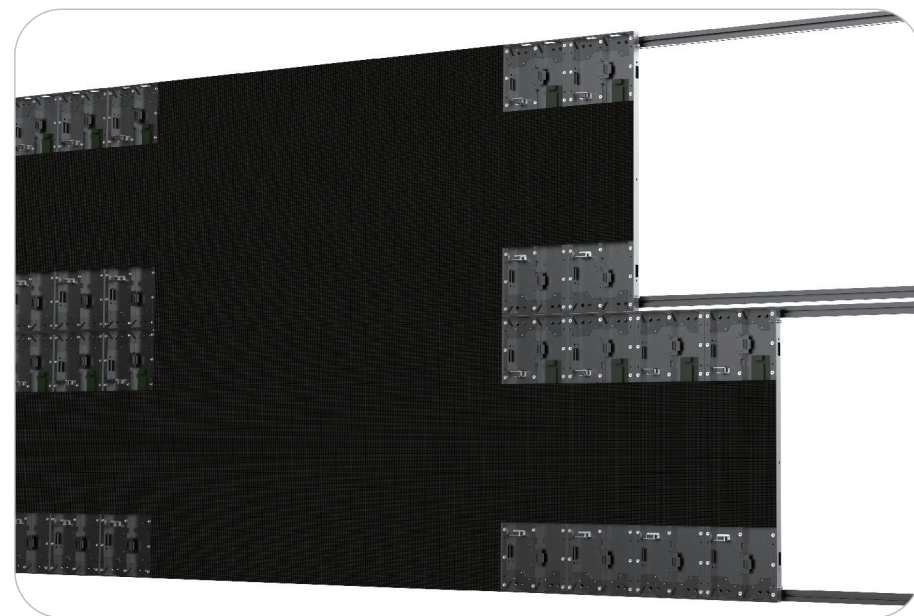
静音
Noise Free

CE  RoHS 

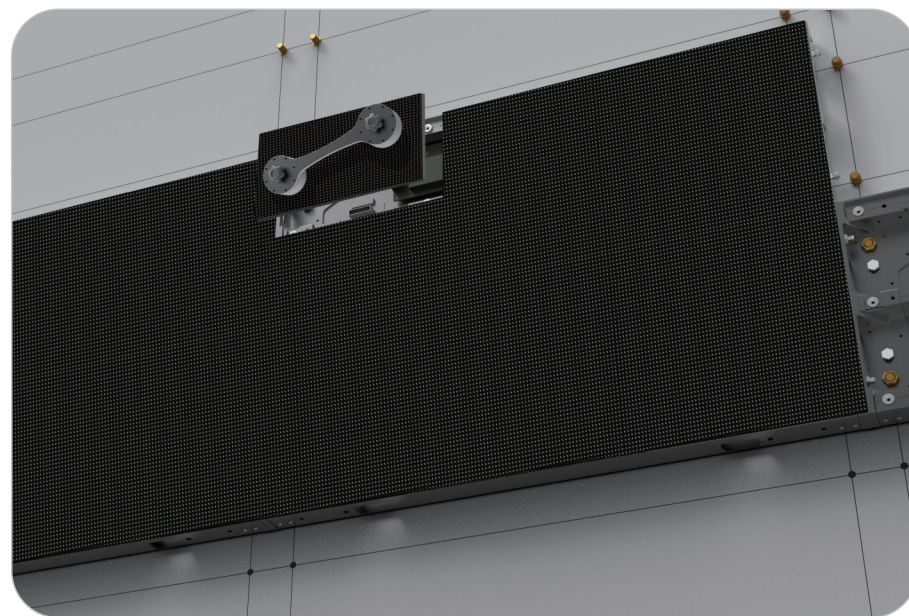


WB
SERIES

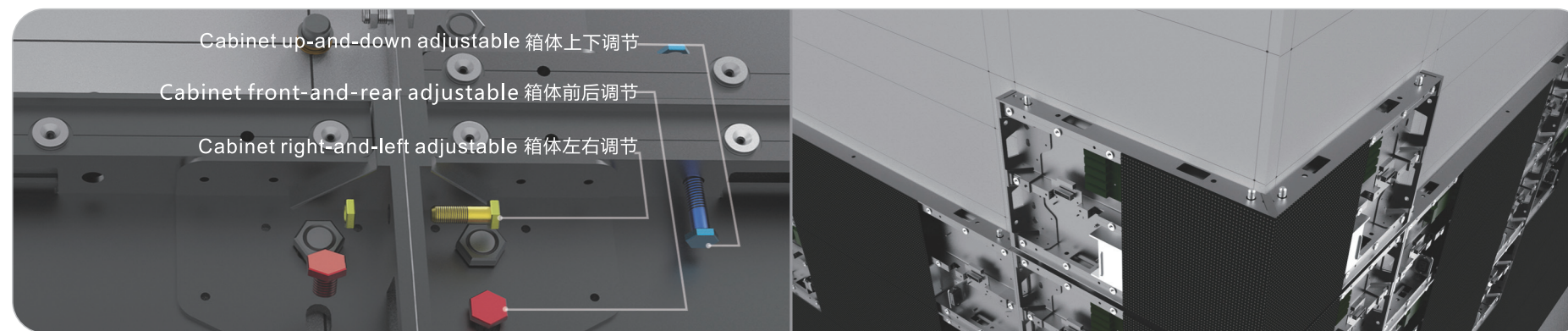
FEATURES 特性



Frame support installation 钢结构安装



Wall-mounted installation 贴墙安装



Wall-mounted installation, positioning adjustable without frame support 无钢结构可直接贴墙安装，微调设计

SPECIFICATIONS 详细参数

参数	Parameter	Unit	WB1.5	WB1.9	WB2.6	WB2.8	WB2.9	WB3.9
像素间距	Pixel pitch	mm	1.563	1.952	2.604	2.841	2.976	3.906
亮度	Brightness	nits	600	800	1200	1100	1100	1200
像素组成	Pixel configuration	R/G/B	SMD 3 in 1					
色温	Colour temperature	deg.K	6500					
水平视角	Viewing angle-Horizontal (50% brightness)	deg.	160 (+70/-70)					
垂直视角	Viewing angle-Vertical (50% brightness)	deg.	140 (+70/-70)					
推荐最小观看距离	Recommended minimum viewing distance	m	1.5	1.9	2.6	2.8	2.9	3.9
箱体宽度	Panel width	mm	1000					
箱体高度	Panel height	mm	281.25					
箱体厚度	Panel depth	mm	42					
箱体面积	Panel area	m ²	0.2813					
箱体材料	Panel material		Die-casting Aluminum + Alloy Aluminum (压铸铝+型材铝)					
箱体重量	Panel weight	Kg	7.9					
防护等级 (前/后)	Ingress protection (front/rear)	IP	30/30					
箱体像素矩阵	Pixel matrix per panel		640x180	512x144	384x108	352x99	336x94	256x72
亮度控制	Brightness control		255					
数字处理	Digital processing	bit	13					
视屏帧频	Frame rate	Hertz	50~60					
视频刷新	Display refresh rate	Hertz	2880					
输入电压	Input voltage	VAC	100~240					
输入电源频率	Input power frequency	Hertz	50~60					
输入最大功耗	Input power (Max.)	W/m ²	480	450	450	480	580	550
输入额定功耗	Input power (Avg.)	W/m ²	168	157	157	168	200	193
工作环境	Operating temperature range	deg.C	-10~+40℃					
显示屏使用寿命	Lifetime (50% brightness)	Hour	100,000					