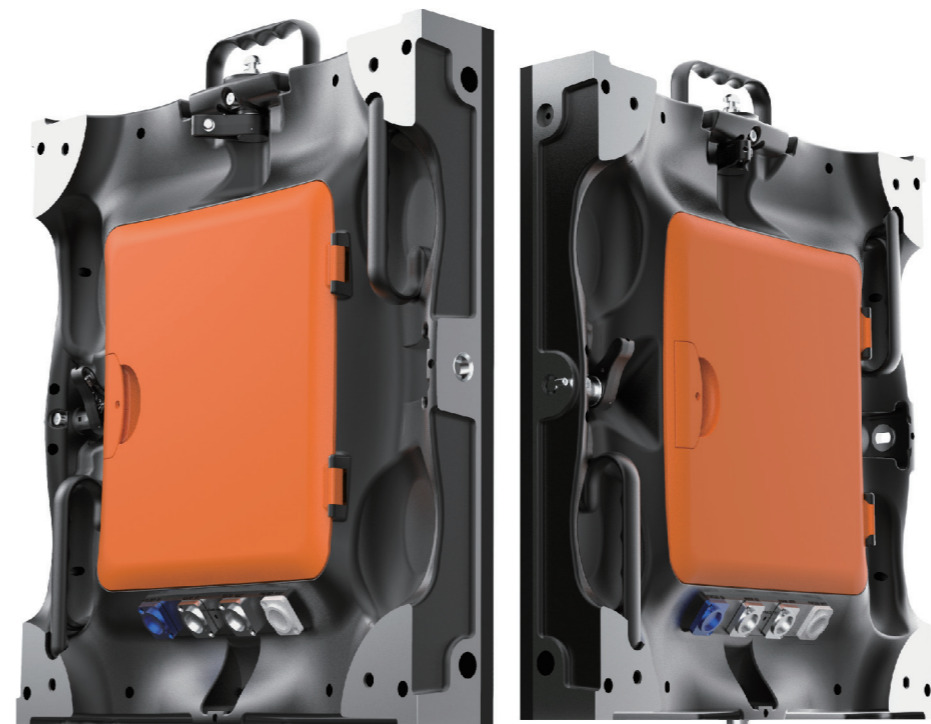


E SERIES 系列

Indoor 480 X 480 fine pitch LED panel 户内480x480小间距显示屏



E SERIES

- Die-casting aluminum frame, lightweight and ultra slim
- Front & rear access
- Memory-on-board IM
- Patented quick lock & positioning design for fast installation
- Innovative clickable mask ensures better flatness and amazing contrast ratio
- User-friendly side lock
- 90 ° corner panel available
- 压铸铝箱，超轻超薄
- 前后维护设计
- 模组带存储功能
- 专利快速定位锁设计，安装效率高
- 专利面罩设计，确保平整度和对比度
- 人体工程学边锁设计，舒适快捷
- 可直角安装，实现异型转角



前维护
Front Access



轻便
Light Weight



高清
High Definition



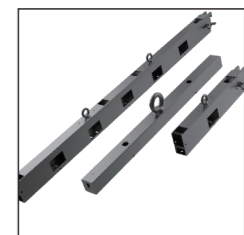
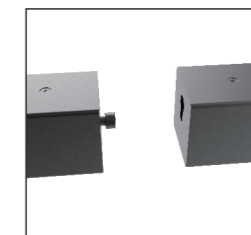
租赁
Rental



超薄
Ultra Slim

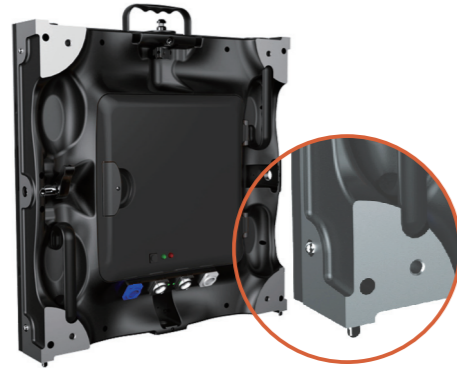


静音
Noise Free



CE ETL RoHS EMC

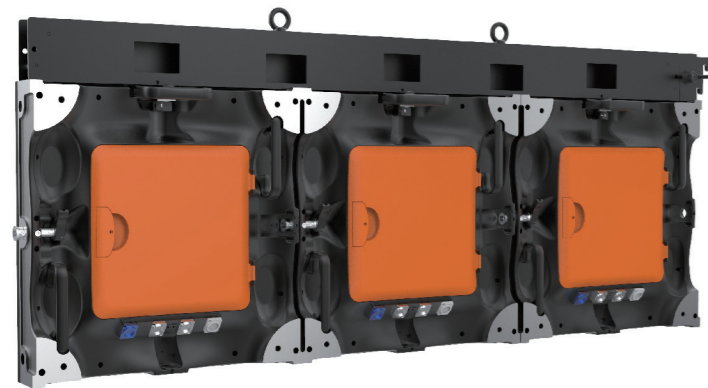
FEATURES 特性



Corner-protection and positioning pin 定位柱确保箱体平整



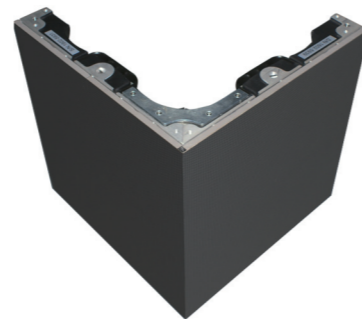
Fast Lock 专利快捷锁



Hanging 吊装



Stacking 堆装



90°corner 直角安装

SPECIFICATIONS 详细参数

参数	Parameter	Unit	E1.2	E1.5	E1.8	E2.5	E3	E3.7	E4
像素间距	Pixel pitch	mm	1.25	1.5	1.875	2.5	3	3.75	4
亮度	Brightness	nits	700	800	900	1200	1200	1200	1200
像素组成	Pixel configuration	R/G/B	SMD 3 in 1						
色温	Colour temperature	deg.K	6500						
水平视角	Viewing angle-Horizontal (50% brightness)	deg.	160 (+80/-80)						
垂直视角	Viewing angle-Vertical (50% brightness)	deg.	140 (+70/-70)						
最小观看距离	Recommended minimum viewing distance	m	1.2	1.5	1.8	2.5	3	3.7	4
箱体宽度	Panel width	mm	480						
箱体高度	Panel height	mm	480						
箱体厚度	Panel depth	mm	77						
箱体面积	Panel area	m ²	0.2304						
箱体材料	Panel material		Aluminum (压铸铝)						
箱体重量	Panel weight	Kg	9.5	9.5	9.5	8.2	8.2	8.2	8.2
防护等级 (前/后)	Ingress protection (front/rear)	IP	30/30						
每箱体像素点	Pixels per panel		147,456	102,400	65,536	36,864	25,600	16,384	14,400
每平方像素点	Pixels per sq.meter		640,000	444,444	284,444	160,000	111,111	71,111	62,500
箱体像素矩阵	Pixel matrix per panel		384x384	320x320	256x256	192x192	160x160	128x128	120x120
亮度控制	Brightness control		255						
数字处理	Digital processing	bit	16						
视屏帧频	Frame rate	Hertz	50/60						
视频刷新	Display refresh rate	Hertz	1920						
输入电压	Input voltage	VAC	100 ~ 240						
输入电源频率	Input power frequency	Hertz	50 ~ 60						
输入最大功率	Input power (Max.)	W/m ²	960	900	880	750	750	610	780
输入额定功耗	Input power (Avg.)	W/m ²	336	315	308	262	270	213	280
工作环境	Operating temperature range	Deg.C	-10 ~ +40						
显示屏使用寿命	Lifetime (50% brightness)	Hour	100,000						