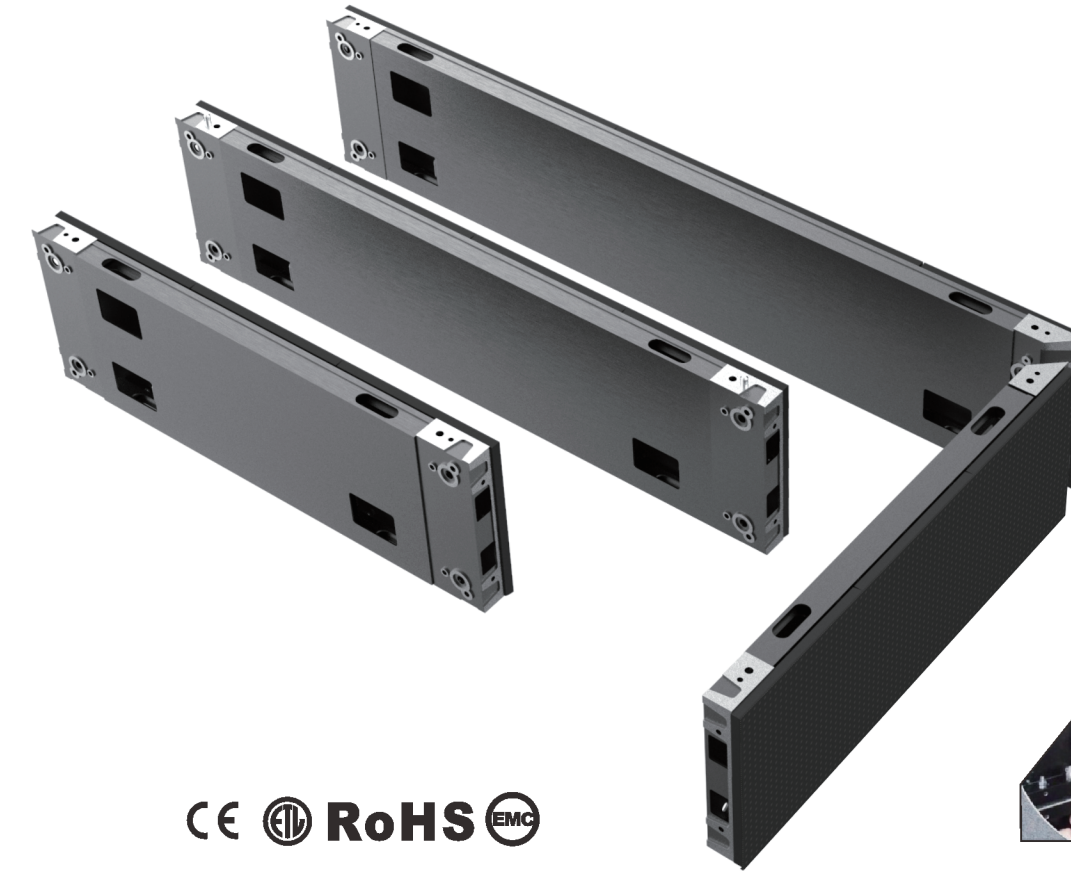


# WP SERIES

Wall paper LED panel



## WP SERIES

- Ultra slim, wall-mounted installation
- 90° corner design
- Dual backup power and signal system optional
- Front access
- Vertical and horizontal panel installation available



Front Access



LightWeight



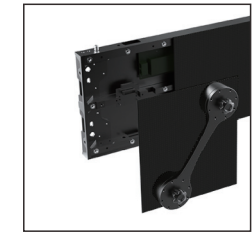
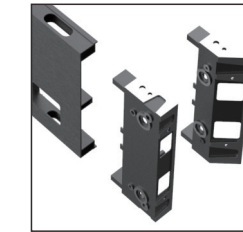
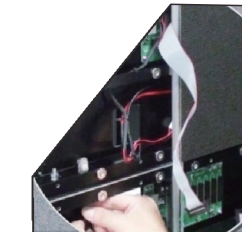
High Definition



Ultra Slim



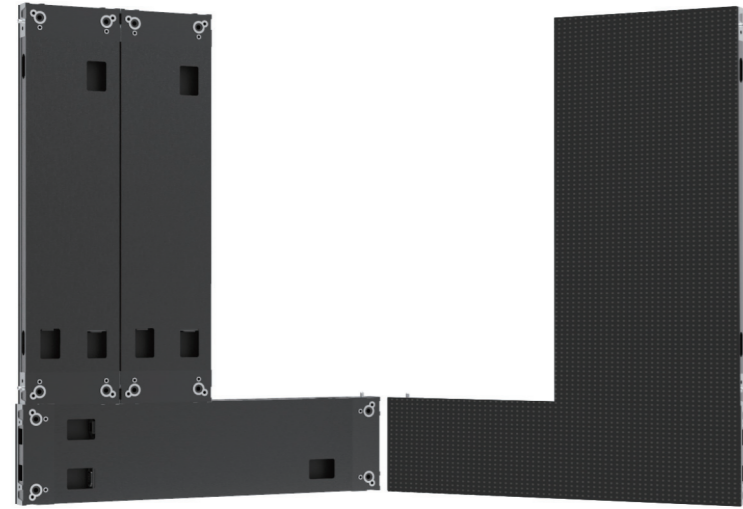
Noise Free



CE  RoHS 



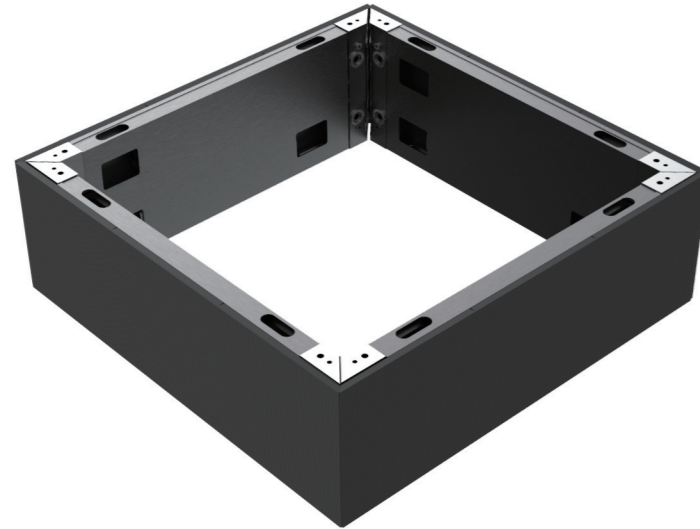
## FEATURES



Vertical & horizontal installation



Customized width optional



Corner panel assembly

## SPECIFICATIONS

Parameter	Unit	WP2.6	WP2.9	WP3.9	WP4.8
Pixel pitch	mm	2.604	2.976	3.906	4.807
Brightness	nits	1000	1000	1000	1100
Pixel configuration	R/G/B	SMD 3 in 1			
Colour temperature	deg.K	6500			
Viewing angle-Horizontal (50% brightness)	deg.	160 (+80/-80)			
Viewing angle-Vertical (50% brightness)	deg.	140 (+70/-70)			
Recommended minimum viewing distance	m	2.6	2.9	3.9	4.8
Panel width	mm	1000			
Panel height	mm	250			
Panel depth	mm	40			
Panel area	m <sup>2</sup>	0.25			
Panel material		Die-casting Aluminum + Aluminum			
Panel weight	Kg	6.7			
Ingress protection (front/rear)	IP	30/30			
Pixel matrix per panel		384*96	336*84	256*64	208*52
Brightness control		255			
Digital processing	bit	14			
Frame rate	Hertz	50~60			
Display refresh rate	Hertz	2880		1920	
Input voltage	VAC	100~240			
Input power frequency	Hertz	50~60			
Input power (Max.)	W/m <sup>2</sup>	420	580	550	400
Input power (Avg.)	W/m <sup>2</sup>	147	200	193	140
Operating temperature range	deg.C	-10~+40			
Lifetime (50% brightness)	Hour	100,000			