

T SERIES

Modular fine pitch LED panel



CE ETL RoHS EMC

T SERIES



- Mirror server function
- Die-casting aluminum frame, lightweight and ultra slim
- 16:9 panel ratio, easy to build 16:9 and 4:3 screen
- Front access, suitable for wall-mounted installation
- Alignment connecting plate ensures perfect flatness
- Power & receiving card dual backup
- Memory-on-board IM
- Low power consumption, noise-free
- EMC class B approved
- Wide viewing angle, high refresh rate, high contrast ratio



Front Access



LightWeight



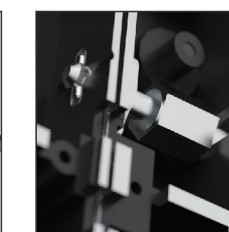
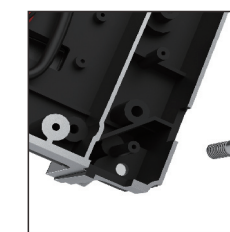
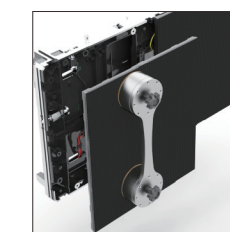
High Definition



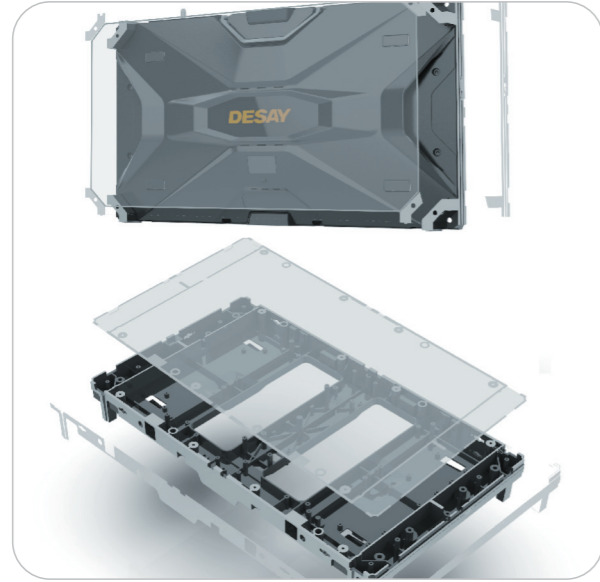
Ultra Slim



Noise Free



FEATURES



CNC machining for high precision



Invisible cabling



Multiple installation

SPECIFICATIONS

Parameter	Unit	T0.7	T0.9	T1.2	T1.5	T1.9	T2.5
Pixel pitch	mm	0.793	0.952	1.269	1.586	1.903	2.538
Brightness	nits	500	600	700	700	800	1000
Pixel configuration	R/G/B	SMD 3 in 1					
Colour temperature	deg.K	6500					
Viewing angle-Horizontal (50% brightness)	deg.	160 (+80/-80)					
Viewing angle-Vertical (50% brightness)	deg.	140 (+70/-70)					
Recommended minimum viewing distance	m	0.7	0.9	1.2	1.5	1.9	2.5
Panel width	mm	609					
Panel height	mm	342.56					
Panel depth	mm	75					
Panel area	m ²	0.2086					
Panel material		Aluminum					
Panel weight	Kg	10					
Ingress protection (front/rear)	IP	20/30					
Pixels per panel		331,776	230,400	129,600	82,944	57,600	32,400
Pixels per sq.meter		1,590,207	1,103,383	620,979	397,552	276,136	155,245
Pixel matrix per panel		768x432	640x360	480x270	384x216	320x180	240x135
Brightness control		255					
Digital processing	bit	16					
Frame rate	Hertz	50/60					
Display refresh rate	Hertz	2000					
Input voltage	VAC	100 ~ 240					
Input power frequency	Hertz	50 ~ 60					
Input power (Max.)	W/m ²	800	800	780	750	720	720
Input power (Avg.)	W/m ²	280	280	273	263	252	252
Operating temperature range	Deg.C	-10 ~ +40					
Lifetime(50% brightness)	Hour	100,000					